



ILUMYA® IS IN IT FOR THE LONG HAUL*

ILUMYA® WORKS WITHIN YOUR BODY
TO PROVIDE RESULTS THAT LAST

*Based on 5-year data.

What is ILUMYA?

ILUMYA® (tildrakizumab-asmn) is a prescription medicine used to treat adults with moderate to severe plaque psoriasis who may benefit from taking injections, pills (systemic therapy), or phototherapy (treatment using ultraviolet or UV light).

SELECTED IMPORTANT SAFETY INFORMATION

ILUMYA is not for everyone, only your doctor can determine if it's right for you. Do not take ILUMYA if you are allergic to ILUMYA or any of its ingredients. ILUMYA may lower your ability to fight infections and may increase your risk of infections. Before starting treatment, your doctor should check you for tuberculosis and infections.

Please read the Important Safety Information on pages 23 and 24 of this brochure and the enclosed full Prescribing Information and Medication Guide.

Visit ILUMYA.com for more information.



got selfies while
walking through a tree

“After my second dose of ILUMYA®,
I didn't see any plaques
and I wasn't always itching.”

Holly C., 42

Started ILUMYA® in June 2020

Individual results may vary.

wow!
the sierras

got lost!
had to make a stop to
ask for directions



best vacation
days

got selfies while
walking through a tree



With ILUMYA® (tildrakizumab-asmn), patients see results after just 2 doses, and most achieve clear or almost clear skin in as little as 12 weeks. And 5 years into treatment, it's still going strong.

The most common ($\geq 1\%$) adverse reactions for ILUMYA® (tildrakizumab-asmn) compared to placebo are upper respiratory infections (14% vs 12%), injection site reactions (3% vs 2%), and diarrhea (2% vs 1%).

ILUMYA® is contraindicated in patients with a history of serious hypersensitivity to tildrakizumab.

 **ILUMYA®**
tildrakizumab-asmn
Injection 100 mg/mL



About those plaques on your skin...

While no one knows the exact cause of plaque psoriasis, scientists do know that it starts in your immune system.

In plaque psoriasis, your skin cells grow more rapidly than normal, rising to the surface of your skin in days rather than weeks. This causes the plaques, redness, and flakes you see on your skin.

That's why it's important to have a treatment that moves past a surface-level approach and treats your symptoms at the source.

ILUMYA® (tildrakizumab-asmn) may increase the risk of infection compared with placebo (23% vs 22%). In clinical trials, the most common ($\geq 1\%$) infections were upper respiratory infections.

Visit [ILUMYA.com](https://www.ilumya.com) for more information.

PLAQUE PSORIASIS TREATMENT OPTIONS

There are several treatment options for plaque psoriasis, including topicals (creams, ointments, and lotions), pills, light therapy, and biologics.

It's possible that you have tried some of these already and are still looking for the right treatment for you.

ILUMYA® IS A DIFFERENT TYPE OF BIOLOGIC MEDICINE

ILUMYA® (tildrakizumab-asmn) is an IL-23 blocker, an advanced biologic medicine used for moderate-to-severe plaque psoriasis treatment to help balance or regulate an overactive immune system.

ILUMYA® is different from topicals and pills. It works within your body to help reduce the symptoms you see on your skin.

ILUMYA®
tildrakizumab-asmn
Injection 100 mg/mL

How ILUMYA® works

ILUMYA® GETS TO THE SOURCE AND WORKS BELOW THE SURFACE

ILUMYA® (tildrakizumab-asmn) works differently than most other biologics to help stop plaque psoriasis in its tracks.

- ILUMYA® blocks an important molecule called IL-23 that plays a key role in making psoriasis worse
- When ILUMYA® blocks the IL-23 molecule, other molecules that cause psoriasis to get worse are also blocked
- Blocking these molecules slows down the growth of skin cells
- With less buildup of skin cells, fewer psoriasis symptoms are likely to occur

ILUMYA® may increase the risk of infection compared with placebo (23% vs 22%). In clinical trials, the most common ($\geq 1\%$) infections were upper respiratory infections.

Your doctor will check you for tuberculosis (TB) before starting treatment with ILUMYA®.

Visit [ILUMYA.com](https://www.ilumya.com) for more information.



“I’m just blown away with the science that makes ILUMYA® work.”

Nancy H., 65

Started ILUMYA® in September 2019

Individual results may vary.

 **ILUMYA®**
tildrakizumab-asmn
Injection 100 mg/mL



Find long-lasting results with ILUMYA®

Cycling through treatments can take its toll. That's why it's good to know that with ILUMYA® (tildrakizumab-asmn), you can get your moderate-to-severe plaque psoriasis under control and keep it under control. See the kind of lasting results that real patients have experienced with ILUMYA® on the following pages.

**CLEARER
AFTER
2 DOSES**



6 out of 10 people were clear or almost clear in as little as **12 weeks** (after just 2 doses).

**1 YEAR
AND
COUNTING**



8 out of 10 people who had 75% clearer skin with ILUMYA® at 7 months were still clearer after **1 year** of treatment.

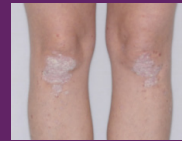
**STILL GOING
STRONG
AT 5 YEARS**



9 out of 10 people who achieved clear or almost clear skin after 1 year were still seeing results **5 years into treatment**.

With results that keep going strong, ILUMYA® is with you for the long haul

BEFORE



Psoriasis plaques on the legs and above the knees

AFTER 2 DOSES



Psoriasis plaques on the legs and above the knees begin to clear after 12 weeks on ILUMYA®

AFTER 3 DOSES



Psoriasis plaques on the legs and above the knees continue to clear after 28 weeks on ILUMYA®

BEFORE



Psoriasis plaques on the arm

AFTER 2 DOSES



Psoriasis plaques on the arm begin to clear after 12 weeks on ILUMYA®

AFTER 3 DOSES



Psoriasis plaques on the arm continue to clear after 28 weeks on ILUMYA®

BEFORE



Psoriasis plaques on the back and arms

AFTER 2 DOSES



Psoriasis plaques on the back and arms begin to clear after 12 weeks on ILUMYA®

AFTER 3 DOSES



Psoriasis plaques on the back and arms continue to clear after 28 weeks on ILUMYA®

The most common ($\geq 1\%$) adverse reactions for ILUMYA® compared to placebo are upper respiratory infections (14% vs 12%), injection site reactions (3% vs 2%), and diarrhea (2% vs 1%).

ILUMYA®
tildrakizumab-asmn
Injection 100 mg/mL

A safety profile we're proud of

When choosing a treatment for moderate-to-severe plaque psoriasis, it's important to consider the potential benefits and side effects. Talk to your dermatologist to see if ILUMYA® (tildrakizumab-asmn) may be the treatment you're looking for.



LOW RATE OF SIDE EFFECTS OVER 5 YEARS

Across 3 clinical studies, the rates of serious infection were the same for those taking ILUMYA® and those who were given an injection without medicine in it (0.3%). The most common ($\geq 1\%$) adverse reactions for ILUMYA® compared to placebo are upper respiratory infections (14% vs 12%), injection site reactions (3% vs 2%), and diarrhea (2% vs 1%).



NO ROUTINE LAB MONITORING NEEDED

Unless your doctor thinks it's necessary, no routine lab monitoring is needed beyond initial screening.



WORKS REGARDLESS OF BMI* OR WEIGHT

In clinical trials of people treated with ILUMYA®, those who had a higher BMI had similar skin clearing and low risk of serious infection as those who didn't have this condition.

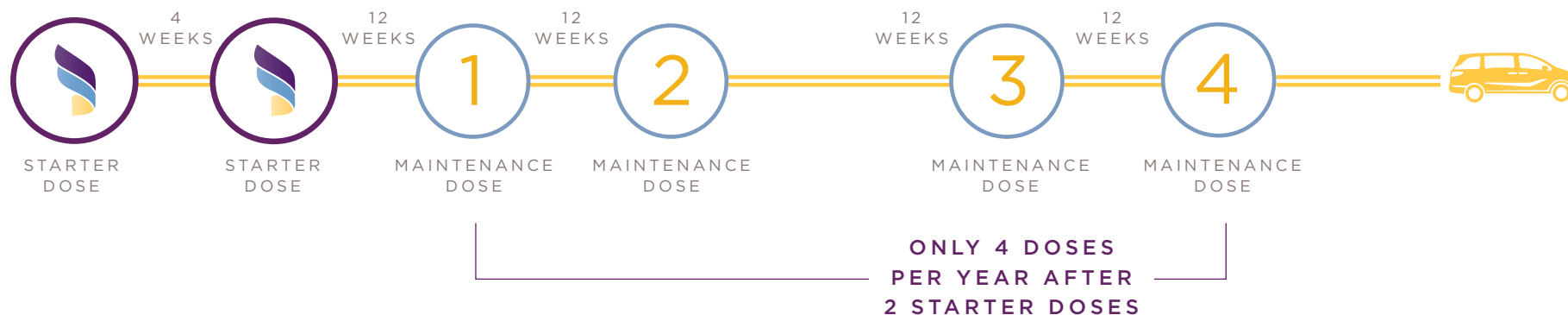
*Body mass index (BMI) is a measure of body fat based on height and weight.

 **ILUMYA®**
tildrakizumab-asmn
Injection 100 mg/mL

Discover the dosing advantage of ILUMYA®

TREATMENT IS ONLY 4 TIMES A YEAR AFTER 2 STARTER DOSES

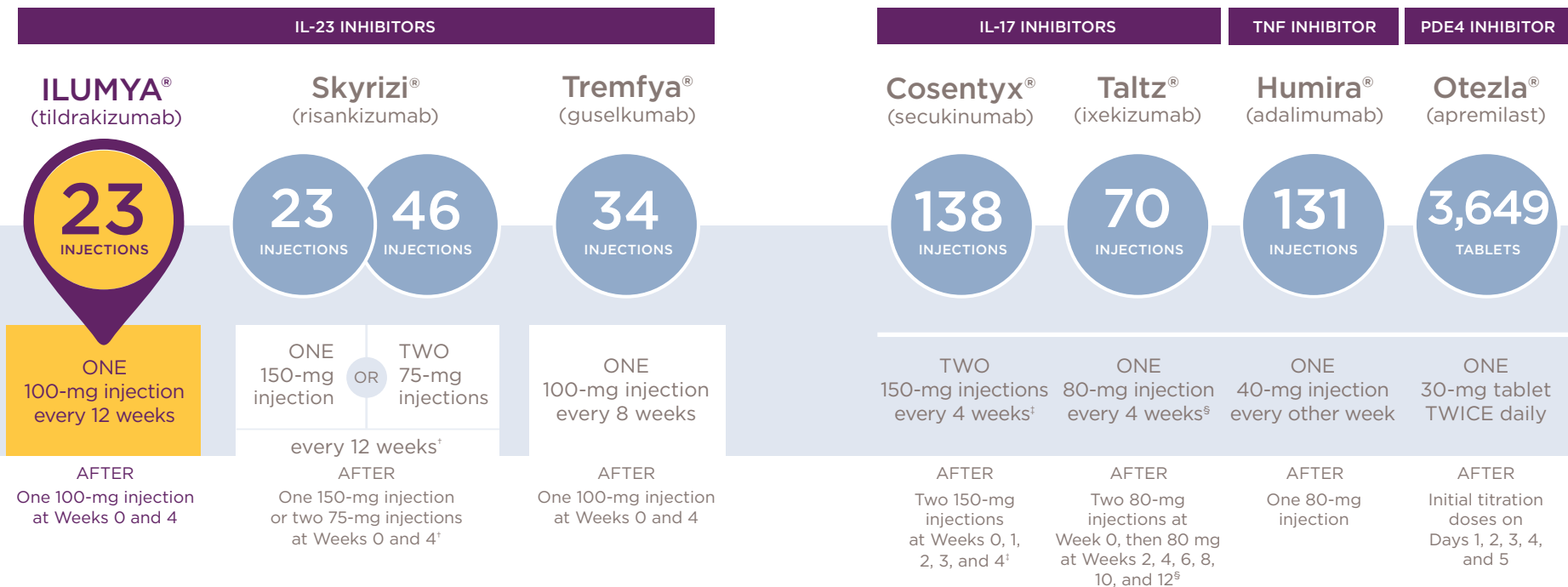
ILUMYA® (tildrakizumab-asmn) isn't a topical that you have to apply a few times a day. It isn't a pill that you have to take daily. In fact, ILUMYA® offers fewer doses per year than most other biologics used to treat moderate-to-severe plaque psoriasis. So now, your treatment doesn't have to be a daily, weekly, or even monthly chore.



The most common ($\geq 1\%$) adverse reactions for ILUMYA® compared to placebo are upper respiratory infections (14% vs 12%), injection site reactions (3% vs 2%), and diarrhea (2% vs 1%).

How many doses can you expect?

See how many doses the different treatment options for moderate-to-severe plaque psoriasis have over a 5-year period*



This graphic is not intended to compare the efficacy or safety of the treatments shown here. Additional considerations, aside from the dosing profile, should be taken into account before making a treatment decision. For complete product information, refer to each product's Prescribing Information.

*Indications and dosage information accessed June 2021. For complete product information, including current indications and dosing, refer to each product's Prescribing Information.

[†] Administered as one 150-mg single-dose prefilled pen or syringe, or two 75-mg prefilled syringes.

[‡] Reflects adult dosing. For some adult patients, a dose of 150 mg may be acceptable.

[§] Reflects adult dosing.

Indicated trademarks are registered trademarks of their respective owners.

Skyrizi® is indicated for the treatment of moderate-to-severe plaque psoriasis in adults who are candidates for systemic therapy or phototherapy.

Tremfya® is indicated for the treatment of adults with moderate-to-severe plaque psoriasis who are candidates for systemic therapy or phototherapy.

Cosentyx® is indicated for the treatment of moderate-to-severe plaque psoriasis in patients 6 years and older who are candidates for systemic therapy or phototherapy.

Taltz® is indicated for the treatment of patients 6 years of age and older with moderate-to-severe plaque psoriasis who are candidates for systemic therapy or phototherapy.

Humira® is indicated for the treatment of adult patients with moderate-to-severe chronic plaque psoriasis who are candidates for systemic therapy or phototherapy, and when other systemic therapies are medically less appropriate. Humira® should only be administered to patients who will be closely monitored and have regular follow-up visits with a physician.

Otezla® is indicated for the treatment of adult patients with moderate-to-severe plaque psoriasis who are candidates for phototherapy or systemic therapy.



ILUMYA SUPPORT

LIGHTING THE WAY®

Patient resources

ILUMYA SUPPORT LIGHTING THE WAY® PROGRAM

Once you and your dermatologist have decided on ILUMYA® (tildrakizumab-asmn), you'll have access to the ILUMYA SUPPORT Lighting the Way® program.

This program was designed to guide you along your treatment journey and can help you:

- Understand your insurance coverage
- Explore your financial options
- Start ILUMYA® quickly and easily
- Stay on track with your doses
- Get support and useful information along the way



3 WAYS TO ACTIVATE YOUR ACCOUNT

You are encouraged to enroll in the ILUMYA SUPPORT Lighting the Way® program through your dermatologist to receive the coverage benefits available to you. To activate your account, choose one of the following 3 options.



Text ACTIVATE to 20808



Visit [ILUMYA.com/activate](https://www.ilumya.com/activate)



Call 855-4ILUMYA (855-445-8692)

By activating, you agree to receive marketing and other loyalty program text messages and emails, including messages sent using an autodialer. You understand that consent is not required as a condition of purchase.

 **ILUMYA®**
tildrakizumab-asmn
Injection 100 mg/mL

The support you need while treating your moderate-to-severe plaque psoriasis



ASK

Ask your dermatologist to submit your ILUMYA SUPPORT Lighting the Way® enrollment form.



CONFIRM

We will confirm if your prescription is covered by your insurance provider and if you are qualified for ILUMYA® (tildrakizumab-asmn) financial support programs.



PREPARE

Prepare for a call from your ILUMYA SUPPORT® team (855-445-8692) or your specialty pharmacy to receive your coverage benefits.



SCHEDULE

Schedule an appointment with your dermatologist for your first dose.



ILUMYA®
tildrakizumab-asmn
Injection 100 mg/mL

The road to finding lasting results with real ILUMYA® patients

DISCOVER HOW ILUMYA® IS IN IT FOR THE LONG HAUL FOR PATIENTS JUST LIKE YOU

“With ILUMYA®, it got better and stayed better.”

Pete M., 42

Started ILUMYA® in June 2019

Individual results may vary.



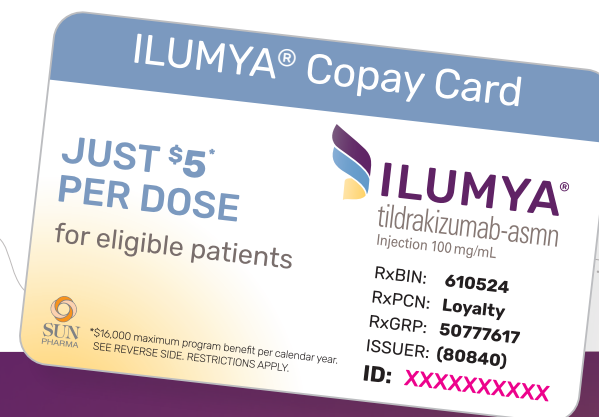
Learn what real patients have to say at [ILUMYA.com/patient-stories](https://www.ilumya.com/patient-stories).

The most common ($\geq 1\%$) adverse reactions for ILUMYA® (tildrakizumab-asmn) compared to placebo are upper respiratory infections (14% vs 12%), injection site reactions (3% vs 2%), and diarrhea (2% vs 1%).

ILUMYA® is contraindicated in patients with a history of serious hypersensitivity to tildrakizumab.

Save on ILUMYA®

Pay as little as \$5* per dose of ILUMYA®



\$5

To find out more about the ILUMYA® Copay Program, visit [ILUMYA.com](https://www.ilumya.com) or call the ILUMYA SUPPORT® Service Team at 855-4ILUMYA (855-445-8692), Monday through Friday, 8 AM to 8 PM ET.

*Eligible commercially insured patients 18 years or older may pay as little as \$5 per dose for an ILUMYA® prescription, subject to a \$16,000 maximum annual program benefit. After the program maximum, patients will be responsible for the difference. This offer is valid only for patients who meet the program eligibility requirements, have commercial insurance that covers ILUMYA®, and have a valid prescription. One digital card per patient, not transferable, and cannot be combined with any other offer.

 **ILUMYA®**
tildrakizumab-asmn
Injection 100 mg/mL

What is ILUMYA?

ILUMYA® (tildrakizumab-asmn) is a prescription medicine used to treat adults with moderate to severe plaque psoriasis who may benefit from taking injections, pills (systemic therapy), or phototherapy (treatment using ultraviolet or UV light).

IMPORTANT SAFETY INFORMATION

What is the most important information I should know about ILUMYA?

Do not use ILUMYA if you have had a severe allergic reaction to ILUMYA or any of its ingredients.

Get emergency medical help right away if you get any of the following symptoms of a serious allergic reaction:

- feel faint
- trouble breathing or throat tightness
- swelling of your face, eyelids, lips, mouth, tongue or throat
- chest tightness
- skin rash

ILUMYA is a medicine that may lower the ability of your immune system to fight infections and may increase your risk of infections. Your healthcare provider should check you for infections and tuberculosis (TB) before starting treatment with ILUMYA and may treat you for TB before you begin treatment with ILUMYA if you have a history of TB or have active TB. Your healthcare provider should watch you closely for signs and symptoms of TB during and after treatment with ILUMYA.

Tell your healthcare provider right away if you have an infection or have symptoms of an infection, including:

- fever, sweats, or chills
- muscle aches
- weight loss
- cough
- warm, red, or painful skin or sores on your body different from your psoriasis
- diarrhea or stomach pain
- shortness of breath
- burning when you urinate or urinating more often than normal
- blood in your phlegm (mucus)

Before receiving ILUMYA, tell your healthcare provider about all of your medical conditions, including if you:

- have any of the conditions or symptoms listed in the section “What is the most important information I should know about ILUMYA?”
- have an infection that does not go away or that keeps coming back
- have TB or have been in close contact with someone with TB
- recently received or are scheduled to receive a vaccine (immunization). You should avoid receiving live vaccines during treatment with ILUMYA.
- are pregnant or plan to become pregnant. It is not known if ILUMYA can harm your unborn baby.
- are breastfeeding or plan to breastfeed. It is not known if ILUMYA passes into your breast milk.

Tell your healthcare provider about all the medicines you take, including prescription and over-the-counter medicines, vitamins, and herbal supplements.

It is not known if ILUMYA is safe and effective in children under 18 years of age.

What are the possible side effects of ILUMYA?

ILUMYA may cause serious side effects. See “What is the most important information I should know about ILUMYA?”

The most common side effects of ILUMYA include: upper respiratory infections, injection site reactions and diarrhea. These are not all of the possible side effects of ILUMYA. Call your doctor for medical advice about side effects.

You are encouraged to report any negative side effects of ILUMYA to FDA. Visit www.fda.gov/medwatch or call 1-800-FDA-1088. You are also encouraged to report side effects or ADEs (adverse drug events) to our Drug Safety Department at 1-800-406-7984 or drug.safetyUSA@sunpharma.com (preferred) with as much information as available.

Please read the accompanying full Prescribing Information and Medication Guide for ILUMYA and discuss any questions with your doctor.





*“It’s almost too good
to be true.”*

Mike Q., 72

Started ILUMYA® in April 2019

Individual results may vary.

The most common ($\geq 1\%$) adverse reactions for ILUMYA® (tildrakizumab-asmn) compared to placebo are upper respiratory infections (14% vs 12%), injection site reactions (3% vs 2%), and diarrhea (2% vs 1%).



ILUMYA.com/activate

 **ILUMYA®**
tildrakizumab-asmn
Injection 100 mg/mL



The ILUMYA registered trademarks are the property of Sun Pharma Global FZE.
© 2021 Sun Pharmaceutical Industries, Inc. All rights reserved.
PM-US-ILY-1550 08/2021

